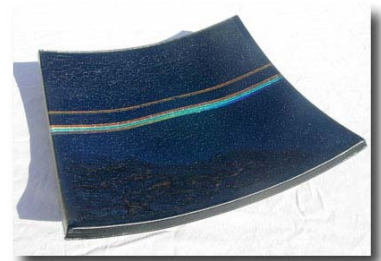
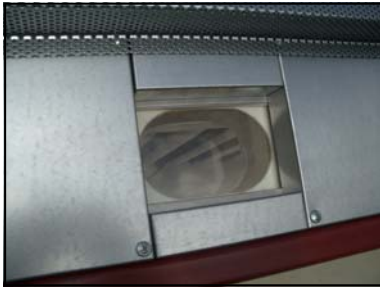


FUSING KILNS



FUSING KILNS

Fusing Kiln G 50E

The perfect Kiln for beginners. Stainless case, fiber insulated top and brick/fiber base. Ventilation/ inspection hole in front. Maximum working area 40x40 cm.

Outside measures: 56x56x50 cm

Inside measures: 42x42x25 cm

Weight approx: 32 kg

Electrical: 3600 W 1-230 V 16 A

Maximum temperature: 950 degrees for all fusing kilns.

Standard controller: Orton AF-3

Optional: Bentrup TC 405/30, stand on wheels.



Fusing Kiln G 170

The perfect Kiln for the advanced artist or schools.

Casing in painted heavy duty steel tubing and stainless steel sheeting.

Top made of fibre board backup and hotface ceramic fibre. Elements in quartz tubes.

Base made of solid refractory bricks.

Stand on wheels included.

Outside measures: 80x126x115 cm

Inside measures: 104x54x25 cm

Weight approx: 155 kg

Electrical: 10 kw 3-400V / 16 A

Standard controller: Bentrup TC 405/30

Optional: Cooling system, glass windows and extended height in top.



Fusing Kiln G 700

A production Kiln with a generous area.

Full size door fillings can easily be made as well as tables and large sculptures.

Maximum working area: 220x100 cm

Technical specifications as above.

Stand on wheels included.

Outside measures: 126x246x115 cm

Inside measures: 104x224x25 cm

Weight approx: 450 kg

Standard controller: Bentrup TC 405/30

Optional: Cooling system, glass windows, slump basins, electrical lifters, extended height in top, side elements in top and Bentrup TC 507

