

# ***HOT POT the small glass furnace.***



**The Hot Pot makes it possible for anyone to start blowing glass at a low cost. This small furnace can be placed in any room and only requires a single phase 10 Amp connection.**

**You just fill the crucible with small pieces of glass and within a couple of hours you can start blowing.**

**The top of the kiln is easy removable which makes it easy to use different crucibles for different coloured glass.**

**This furnace is equipped with an Orton AF-3 fully programmable controller that stores 4 programmes with up to 8 ramps in each programme.**

**Teknical data: Outside measures: 43x43x35 cm    Inside measures: 22x22x11 cm  
Weight: approx 25 kg**

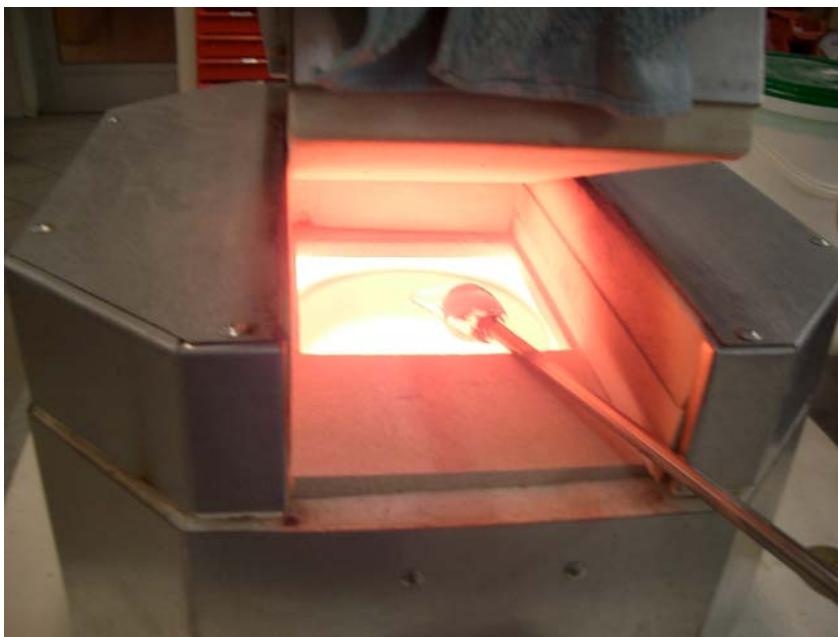
**Max temperature: 1150 degrees**

**Electrical data:    Single phase 230 V    1150 W**

**Extras for glass blowing: Glory hole, Annealing kiln and tools.**



**A small beadannealer works well for cooling the glass.**



**The glass working temperature is approx 1120 degrees. This is Bulls eye.**



**A small glory hole is used to shape the glass.**

